

# SPEC SHEET + MEASUREMENTS

PORT AUTHORITY.

## Port Authority® Women's Easy Care Open-Front Cardigan Sweater. LSW2890

### Product photo



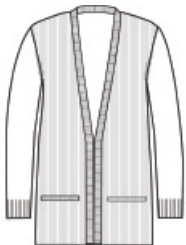
Blending professionalism with supreme comfort, this beautiful tri-blend sweater is an exceptional addition to any work wardrobe.

- 56/29/15 cotton/nylon/acrylic
- Fully-fashioned seams
- Machine washable
- 2x1 rib knit front body, cuffs and back hem
- Jersey sleeves and back body
- Rib knit front lapel
- Front pockets
- Longer length

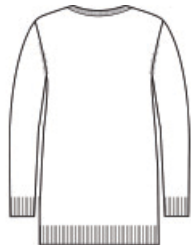
### CARE INSTRUCTIONS

Turn Garment Inside Out. Machine Wash Cold With Like Colors. Gentle Cycle. Only Non-Chlorine Bleach When Needed. Reshape And Lay Flat To Dry. Warm Iron If Needed.

### Sketches



front



back

# SPEC SHEET + MEASUREMENTS

PORT AUTHORITY

Port Authority® Women's Easy Care Open-Front Cardigan  
Sweater. LSW2890

## PRODUCT MEASUREMENTS

	XS	S	M	L	XL	XXL	3XL	4XL
Size	2	4/6	8/10	12/14	16/18	20/22	24/26	28/30
Body Length at Back	29 1/4	29 3/4	30 1/4	30 3/4	31 1/4	31 3/4	32 1/4	32 3/4
Bust	20	21	22	23 1/2	25	26 1/2	28 1/2	30 1/2
Sleeve Length from Center Back	31	31 1/2	32	32 5/8	33 1/4	33 7/8	34 1/4	34 5/8

**Body Length at Back:** Measured from high point shoulder to finished hem at back.

**Bust:** Measured across the chest one inch below armhole when laid flat.

**Sleeve Length from Center Back:** Measure from Center Back neck to shoulder point to sleeve hem.

## SIZE CHARTS

	XS	S	M	L	XL	XXL	3XL	4XL
Size	2	4/6	8/10	12/14	16/18	20/22	24/26	28/30
Bust	32-34	35-36	37-38	39-41	42-44	45-47	48-51	52-55

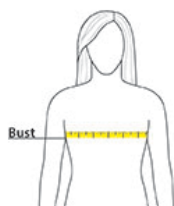
# SPEC SHEET + MEASUREMENTS

PORT AUTHORITY

Port Authority® Women's Easy Care Open-Front Cardigan  
Sweater. LSW2890

## HOW TO MEASURE

---



### BUST

Measure under the arm and around the fullest part of the bust with arms down, keeping tape horizontal.

## COLORS

---



Charcoal  
Heather  
PMS 7540C



Deep Black  
PMS Black C



Medium  
Heather Grey  
PMS 425C



Oatmeal  
Heather



River Blue  
Navy  
PMS 533C